



*German Team*

# Localization with Field Lines

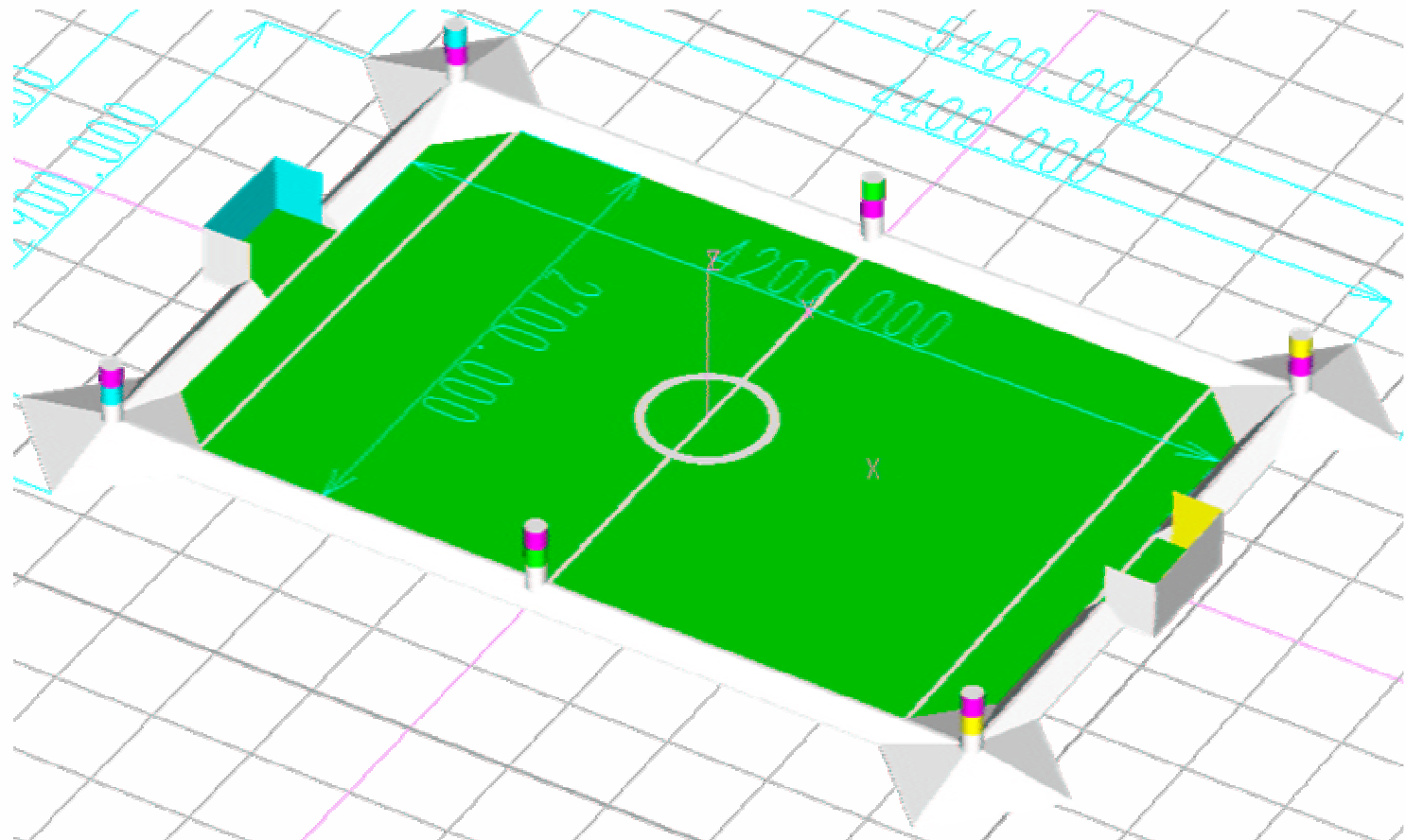
Thomas Röfer, Matthias Jüngel

GermanTeam 2002  
Sony Legged Robot League

Humboldt Universität Berlin, Universität Bremen,  
Universität Darmstadt, Universität Dortmund

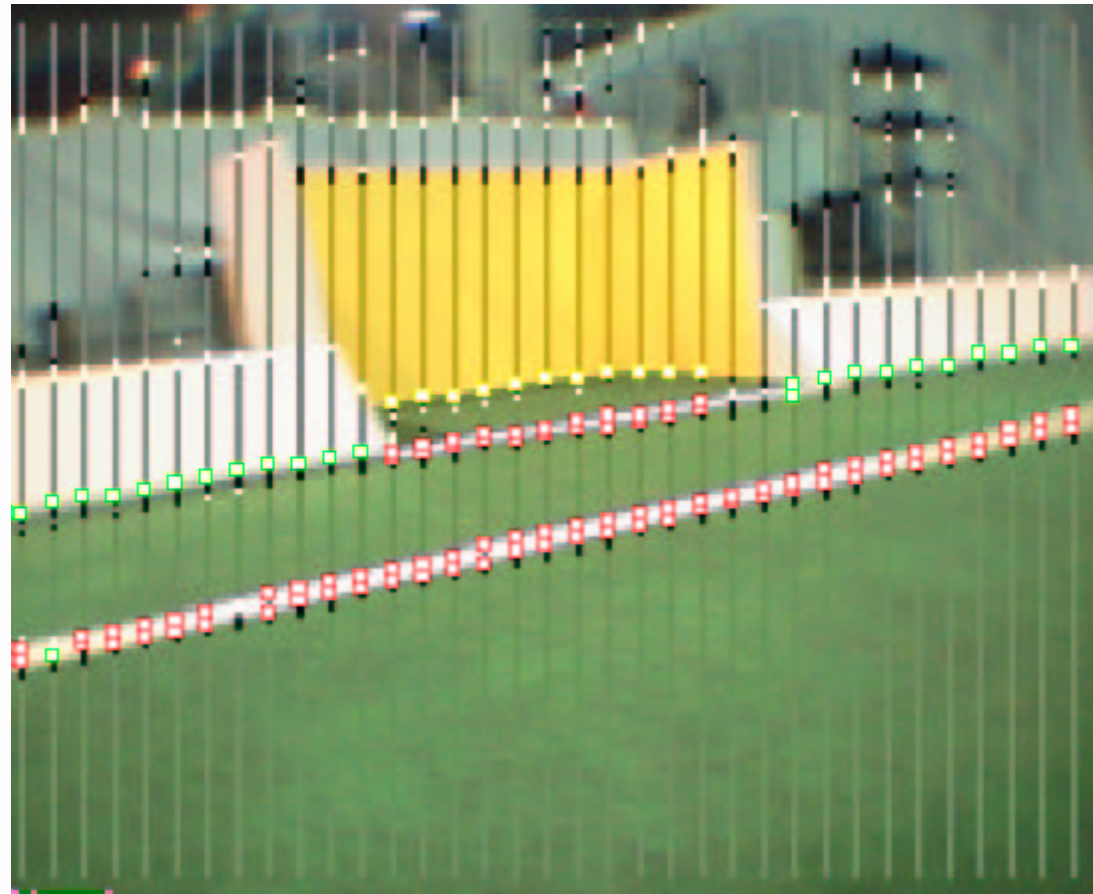


# Localization



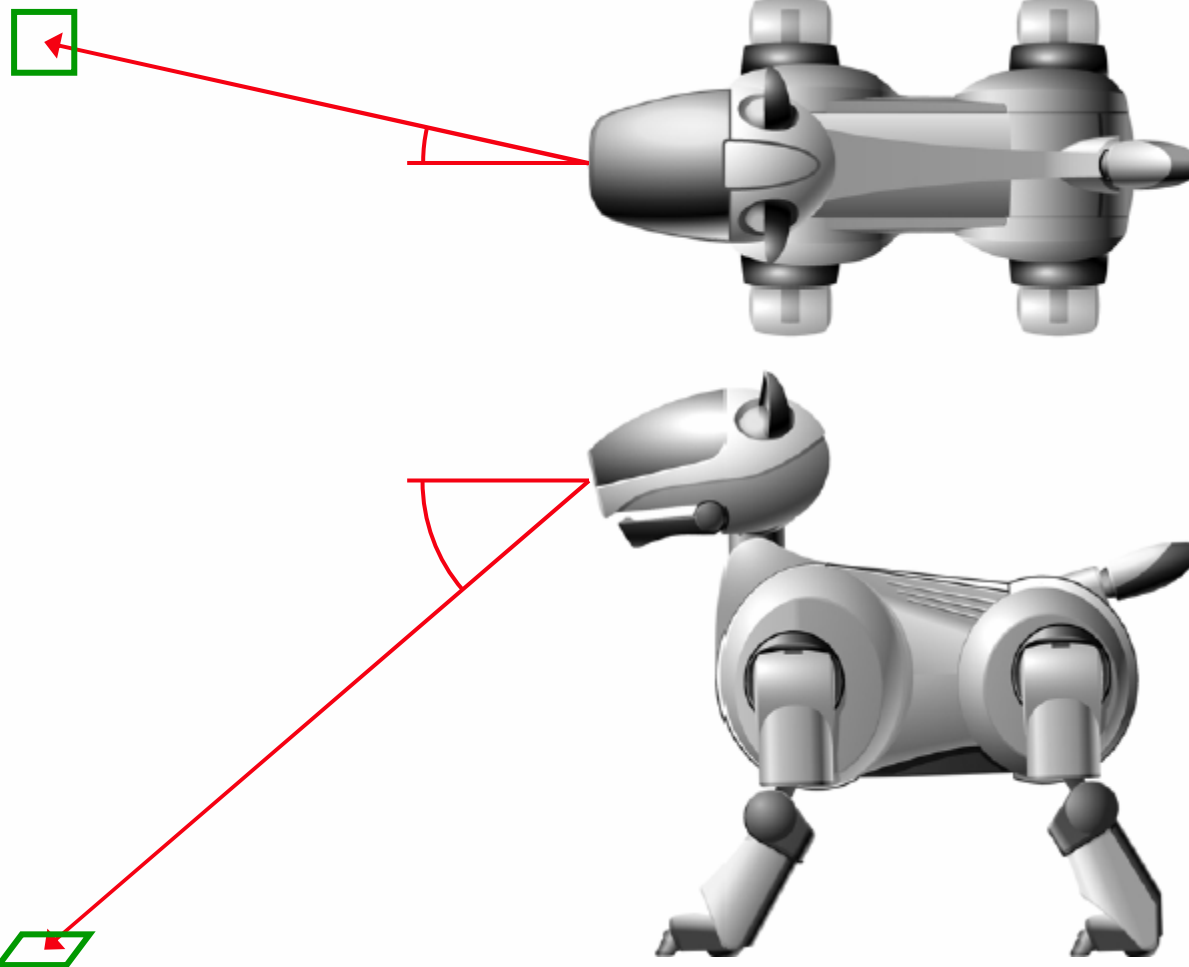


# Detecting Field Lines



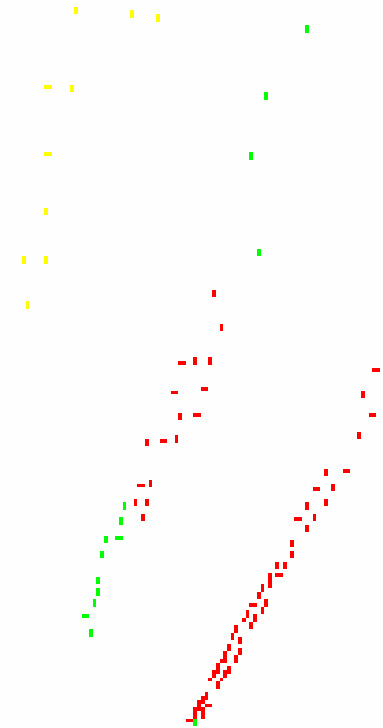
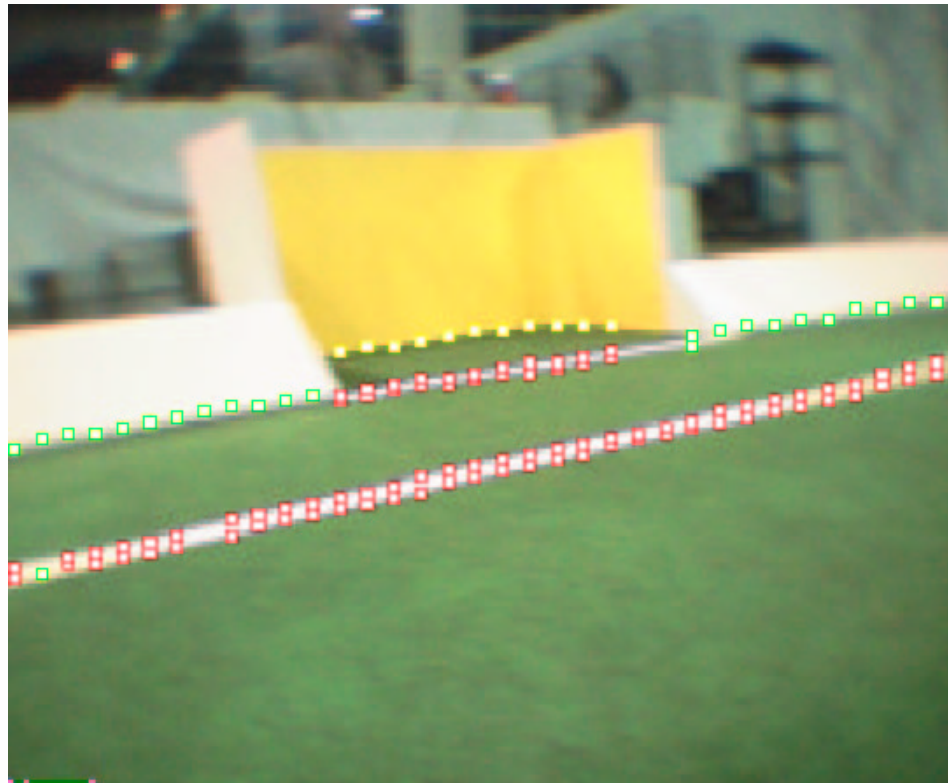


# Projection on the Field



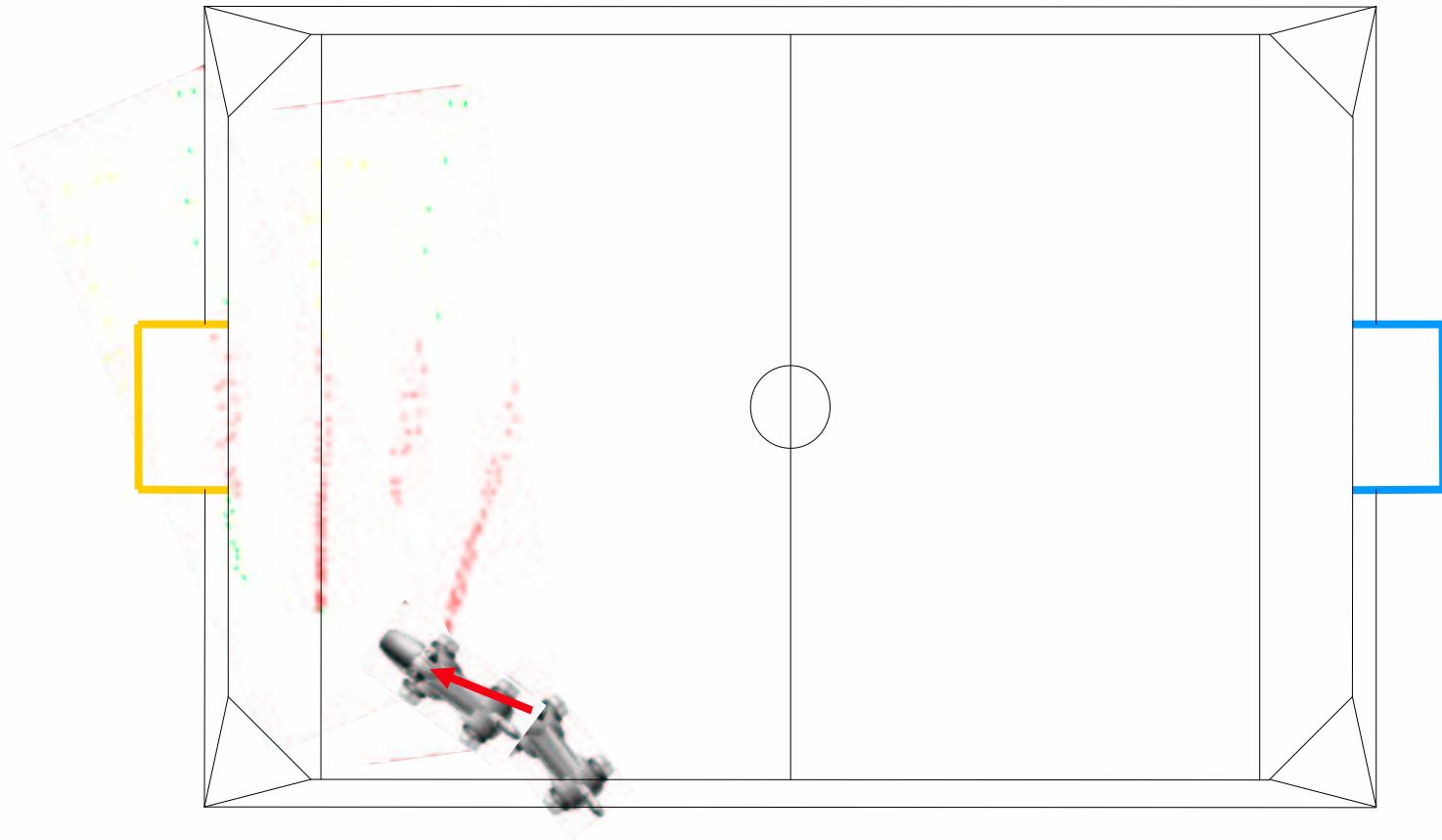


# Projection on the Field





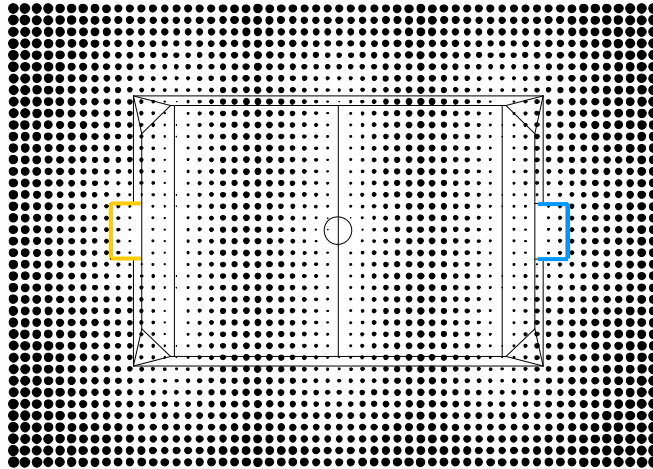
# Localization



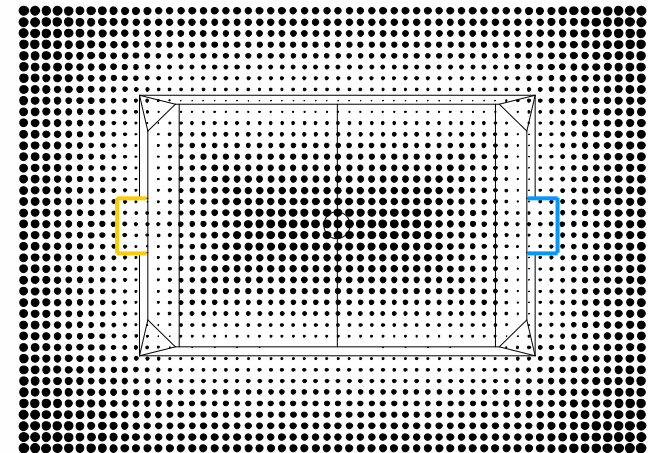


# Assigning Observations to Field Model

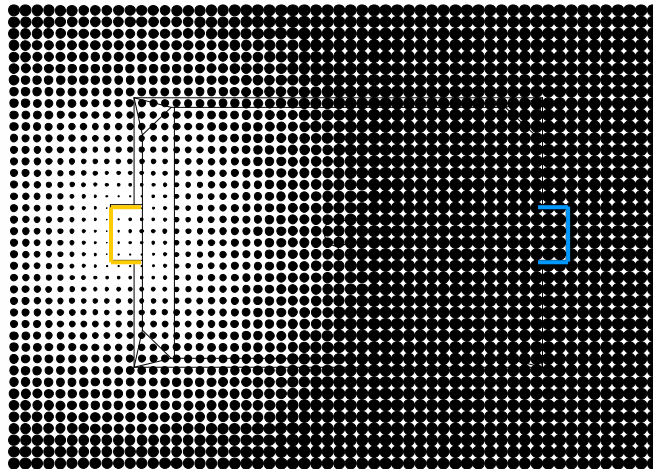
Lines



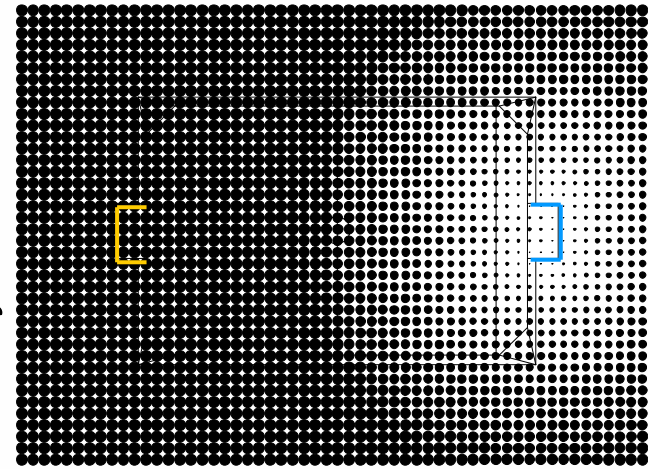
Border



Yellow Goal



Skyblue Goal





# Demo

